

# ESMERALDA COUNTY DEMOGRAPHICS

Population				
	1999	1990	1980	1970
County	1,520	1,344	777	629

Source: Nevada State Demographer

Population Projections				
	2001	2002	2003	2004
County	1,546	1,558	1,571	1,585

Source: Nevada State Demographer

Age (1999)	
0-17	23.6%
18 - 34	21.0%
35 - 54	33.2%
55 - 64	10.3%
65 - 74	6.7%
75 +	5.2%

Esmeralda County's Median Age: 38.2 (1999)  
Source: Nevada State Demographer

Race and Hispanic Origin-(1999)	
White	78.2%
Black	1.1%
American Indian, Eskimo, or Aleut	5.9%
Asian or Pacific Islander	1.2%
Hispanic Origin (of any race)	13.7%

Source: Nevada State Demographer

Labor: (Sept 1999) - Non-agricultural			
Industry	Employment	Avg. Wkly. Wage Esmeralda Co.	Avg. Wkly. Wage Statewide
Total	370	\$731	\$ 595
Mining	160	1046	1039
Const.	30	476	727
Mfg.	n/a	n/a	695
TCPU	n/a	n/a	682
Trade	20	220	456
FIRE	n/a	n/a	721
Service	20	681	549
Gov't	130	436	744
Unemployment figures:		10.0%	(1999)
Per capita income:		\$19,216	(1997)

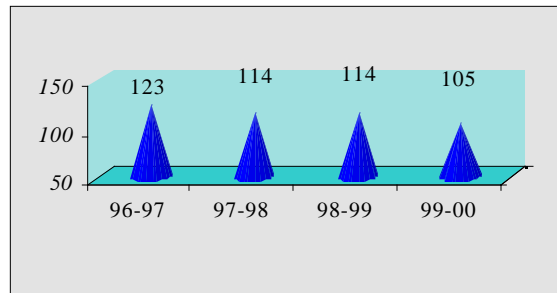
Source: Labor Market Summary

Major Employers	
Mineral Ridge Resource	100
Cyprus Foote Mineral Company	100
Tolicha Peak	100
White Mountain Ranch, Inc.	100
DFI Systems	100
Grefco Minerals, Inc.	100
Columbus S.M. LLC	100
J & K Construction	100

Source: State of Nevada, Department of Employment, Training & Rehabilitation  
[http://www.state.nv.us/detr/lmi/data/top\\_003.htm](http://www.state.nv.us/detr/lmi/data/top_003.htm)

## EDUCATION:

## Public School Enrollment



Source: NV Dept of Education

High Schools: High school students are bused to Tonopah in Nye County.  
Elementary: Dyer Elementary  
School(s) K-8: Goldfield Elementary

Silver Peak Elementary  
Number of Students per Teacher: 12:1  
Average Salaries of Teaching Personnel: \$35,859  
Source: NV Edu [www.nsn.k12.nv.us/nvdoe/reports/districtsandschools9798/sec9798e.pdf](http://www.nsn.k12.nv.us/nvdoe/reports/districtsandschools9798/sec9798e.pdf)

Community College of Southern Nevada	
Location(s):	Tonopah, Beatty, Pahrump & others Main Campus --- Las Vegas, NV
Cost per credit:	\$42.50 (Fall 2000)
Total Enrollment:	33,000 (Fall 2000)
Job Training Programs:	Yes
Contact:	Office of Admissions 3200 E. Cheyenne Avenue Las Vegas, NV 89030 (702) 643-6060

<http://www.nevada.edu/>

## COMMUNITY SERVICES/ORGANIZATIONS:

### Churches:

Baptist - Goldfield, Silver Peak, Fish Lake  
Catholic - Fish Lake  
Episcopalian - Fish Lake

**Medical:** Nearby Tonopah has a hospital, a mental health clinic, an optometrist and two dentists.

**Senior Citizens Center:** The Tonopah facility serves and delivers meals and provides recreation and some transportation. There is one senior citizens bus located in Goldfield and one in Silver Peak.

**Library:** There are public library branches in Goldfield, Silver Peak and Fish Lake Valley.

**Other Organizations:** Goldfield has a Chamber of Commerce, a Historical Society, Girl Scouts, Order of Eastern Star and the Montezuma Lodge #30 F&AM. Silver Peak has a Beta Sigma Phi Chapter and Fish Lake has a Dorcas Women's Club.

## TRANSPORTATION:

### Highway System -

Highway 95 (North-South) -

Northbound	Goldfield
Tonopah.....	28 miles
Carson City....	235 miles
Reno.....	265 miles
Southbound	

Las Vegas .... 186 miles  
Phoenix ..... 500 miles

#### Motor Freight Companies -

Goldfield via Tonopah - Motor Cargo, Fleet  
Delivery & Anderson Trucking

Silver Peak - Parsons, Ed Brown & Sandrock

#### Rail System -

The nearest rail service for Esmeralda County is located  
in Clark County. Freight service is provided by Union  
Pacific Railroad Company.

Union Pacific Railroads - (800) 272-8777

Amtrak (Passenger) ----- (800) 872-7245

#### Bus Service -

K-T Services daily to Las Vegas and Reno, connecting  
with Greyhound.

#### Airport(s) -

Tonopah: Runway 15-33: 7,160 by 80; paved &  
lighted

Runway 11-29: 6,000 by 60; paved &  
unlighted

Goldfield, Silver Peak, Fish Lake, Coaldale & Lida  
Junction airports are short gravel.

### **Tax Structure**

Sales and Use Tax	6.5% (None on grocery items or medications)
Property Tax	Assessment is 35% of full cash value
Goldfield	\$2.82 per \$100 assessed value
Balance of Co.	\$2.82 per \$100 assessed value
Gasoline Tax	\$.33/gallon
Diesel Tax	\$.27/gallon
Corporate Income Tax	NONE
Personal Income Tax	NONE
Unitary Tax	NONE
Inventory Tax	NONE
Franchise on Income Tax	NONE

Source: Nevada Department of Taxation FY 2000-2001  
Property Tax Rates

### **Climate**

Average Temperatures	
January average high:	42.3° F
January average low:	21.2° F
July average high:	88.8° F
July average low:	59.4° F

Western Regional Climate Center - <http://www.wrcc.dri.edu/cgi-bin/cliMAIN.pl?nvgold>

### **Public Utility**

Electricity: Goldfield and Silver Peak  
Sierra Pacific Power Company  
985 South Main  
Tonopah, NV 89049  
Phone: (775) 482-6808

Fish Lake and Gold Point  
Valley Electric Association  
800 E. Highway 372  
Pahrump, NV 89048  
(775) 727-5312

Propane: Amerigas  
410 Cutting Street  
Tonopah, NV 89049  
(775) 482-3303

Suburban Propane  
421 Depot Street  
Tonopah, NV 89049  
Phone: (775) 482-6252

Tippin Water and Sewer  
565 N. Main  
Tonopah, NV 89049  
Phone: (775) 482-8585

Telecommunications: Nevada Bell  
P.O. Box 10900  
Reno, NV 89510  
Phone: (775) 333-4811

Water & Sewer: Goldfield - water and sewer  
available  
Silver Peak - water system, septic  
system  
Fish Lake - wells and septic system

Telecommunications: Citizens Communications  
111 W. Front Street  
Elko, NV 89801  
Phone: (775) 482-6242

#### **QUALITY OF LIFE:**

Esmeralda County offers excellent hunting, fishing,  
hiking, and four wheel drive trails. Those interested in  
history can view petroglyphs, old mining camps and  
ghost towns. The county's small communities provide  
tennis courts, baseball fields and rodeo facilities. Gliders  
and sailplanes are popular here. Esmeralda County has an  
abundance of open space and its inhabitants respect  
individualism and privacy.

Compiled by NCED Research  
Revised 11/2000