

STOREY COUNTY DEMOGRAPHICS

Population				
	1999	1990	1980	1970
County	3,740	2,560	1,503	695

Source: Nevada State Demographer

Population Projections (Township)				
	2001	2002	2003	2004
County	4,113	4,193	4,263	4,325

Source: Nevada State Demographer

Age (1999)	
0-17	23.0%
18-34	19.7%
35-44	17.1%
45-54	17.8%
55-64	10.6%
65-74	6.8%
75 And over	5.0%

Storey County's Median Age: 40.0 (1999)

Source: Nevada State Demographer

Race and Hispanic Origin (1999)	
White	89.1%
Black	0.5%
American Indian, Eskimo, or Aleut	1.7%
Asian or Pacific Islander	1.7%
Other (non-hispanic)	0.1%
Hispanic	6.8%

Source: Nevada State Demographer

Labor: (Sept. 1999) – Non-agricultural			
Industry	Employment	Avg. Wkly. Wage Storey Co.	Avg. Wkly. Wage Statewide
Total	960	\$607	\$595
Mining	100	818	1,039
Const.	20	323	727
Mfg.	150	968	695
TCPU	100	1,380	682
Trade	210	279	456
FIRE	N/A	N/A	721
Service	170	288	549
Gov't	210	557	744

Unemployment Figures: 3.0% (1999)

Per capita income: \$21,602 (1997)

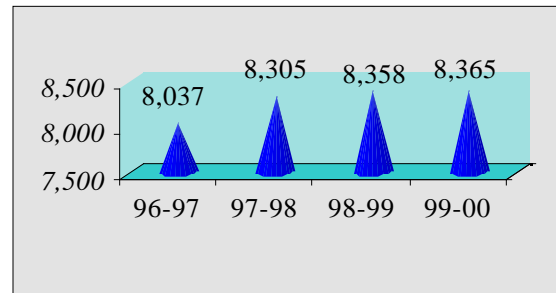
Source: Labor Market Summary

Major Employers	
Kal Kan Foods, Inc.	200 employees
Storey County School District	200 employees
Sierra Pacific Power	200 employees
Eagle-Pitcher Minerals, Inc.	100 employees
Archaeological Research Services	100 employees
Bonanza Saloon and Gaming	100 employees
Bucket of Blood Saloon	100 employees
Nevada Hydrocarbon Inc.	100 employees

Source: State of Nevada, Department of Employment, Training & Rehabilitation
http://www.state.nv.us/detr/lmi/data/top_003.htm

EDUCATION:

Public School Enrollment



Source: NV Dept of Education

ACT & SAT Scores (School Year 1997 – 1998)		
Comparison	Storey Co.	United States
SAT (Verbal)	568	505
SAT (Math)	518	512
ACT (composite)	22.4	20.8

NV Dept of Edu
www.nsn.k12.nv.us/nvdoe/reports/districtsandschools9798/sec9798e.pdf
 USA Dept of Edu SAT: <http://nces.ed.gov/fastfacts/display.asp?id=53>
 USA Dept of Edu ACT <http://nces.ed.gov/pubs2000/digest99/d99t138.html>

High School: Virginia City High School 9 - 12

Middle School: Virginia City Middle School 6 - 8

Elementary School: Gallagher Elementary K - 5
 Hillside Elementary K - 6

Number of Students per Teacher: 13:1

Average Salaries of Teaching Personnel: \$42,33

Dropout Rate in Storey County (9-12): 3.8%

Source: NV Edu
www.nsn.k12.nv.us/nvdoe/reports/districtsandschools9798/sec9798e.pdf

Western Nevada Community College

Location(s): Carson City (Main Campus)
 (16 miles West of Virginia City)

Cost per credit: \$42.50 (Fall 2000)

Total WNCC Enrollment: 6,000 (Fall 2000)

Job Training Programs: Yes

Contact: Admissions & Records
 2201 W. College Pkwy.
 Carson City, Nevada 89703

<http://www.nevada.edu/>

TRANSPORTATION:

Ideally located, Storey County provides next day freight service to 80 percent of the 11-state western region.

Highway System -

Interstate 80 (East-West)	
Access 24 miles north in Reno	
Highway 395 (North-South) <small>Mileage from Carson City</small>	
Access 16 miles west in Carson City	
Northbound	
Reno	30 miles
.....	
Portland	596 miles
.....	
Seattle	774 miles
.....	
Southbound	
Los Angeles...	443 miles
San Diego.....	537 miles
Highway 50 (East-West) <small>Mileage from Carson City</small>	
Westbound	
Sacramento ...	133 miles
San Francisco	226 miles
Eastbound	
Salt Lake City.	559 miles
Denver	1063 miles
.....	

Motor Freight Companies -

Over 60 local, regional and national carriers with daily service to 80 percent of the 11 state western region.

Rail System - (East - West)

Storey County does not have rail service. All rail service is located 24 miles north in Reno. Freight service is provided by Southern Pacific Lines and Union Pacific Railroad Company.

Southern Pacific Lines ---	(775) 356-2654
Union Pacific Railroads -	(775) 322-6946
Amtrak (Passenger) -----	(800) 872-7245

Airport -

Nearest commercial airport is located 24 miles north in Reno.

Tax Structure

Sales and Use Tax	7.0% (None on grocery items)
Property Tax - Assessment	35% of full cash value
Storey County	\$2.69 per \$100 assessed value
Gold Hill Town	\$2.87 per \$100 assessed value
Virginia City	\$2.85 per \$100 assessed value
Personal Income Tax	NONE
Corporate Income Tax	NONE
Unitary Tax	NONE
Inventory Tax	NONE
Franchise on Income Tax	NONE
Inheritance Tax	NONE

Source: Nevada Department of Taxation FY 2000-2001
Property Tax Rates

Public Utility

Electricity:	Sierra Pacific Power Company 6100 Neil Road (Physical Address) Reno, Nevada 89511 PO Box 10100 (Mailing Address) Reno, Nevada 89520 Phone: (800) 227-2600	
Gas, Propane & Oil: (LP Gas)	Amerigas Bi-State Propane Carson Pro Flame Gas	(775) 677-0434 (775) 331-3100 (775) 246-3077
Telecommunications:	Nevada Bell 1450 Vassar Reno, NV 89502 Phone: (775) 333-4811	
Water & Sewer:	Public Works & Water Systems 100 Toll Road Virginia City, NV 89440 Phone: (775) 847-0958	
Disposal:	Capital Sanitation 711 N. Nevada Carson City, NV 89703 Phone: (775) 882-3380	

INDUSTRIAL DEVELOPMENT:

During the last year, Storey County has received commitments from two large manufacturers to locate their facilities within the county by the end of 1996. Both Kal Kan Pet Foods, manufacturer of dog food, and Kaiser Sierra Micromills LLC. have committed to locating facilities near Patrick. Patrick is an ideal location to many because of its proximity to Reno (Reno is 16 miles West of Patrick) and Interstate and rail access. Another advantage is that this location is isolated in that the nearest residential community is five miles away. Overall, Storey County is well positioned to support new industry and growth.

QUALITY OF LIFE:

Storey County is unique in many ways. Virginia City, once the richest mining town in the world and now a National Landmark, offers a fascinating journey back in time. At the peak of its glory, Virginia City was a boisterous 24-hour town with nearly 30,000 residents. Today, Virginia City, population around 900, represents the largest National Landmark in the country and is a popular tourism site. Industrial development was nowhere to be seen until the recent discovery of the area surrounding Patrick. Now, Storey County officials can concentrate on the development of Patrick in hopes of attracting quality companies to the region.

Compiled by NCED Research
Revised 11/2000